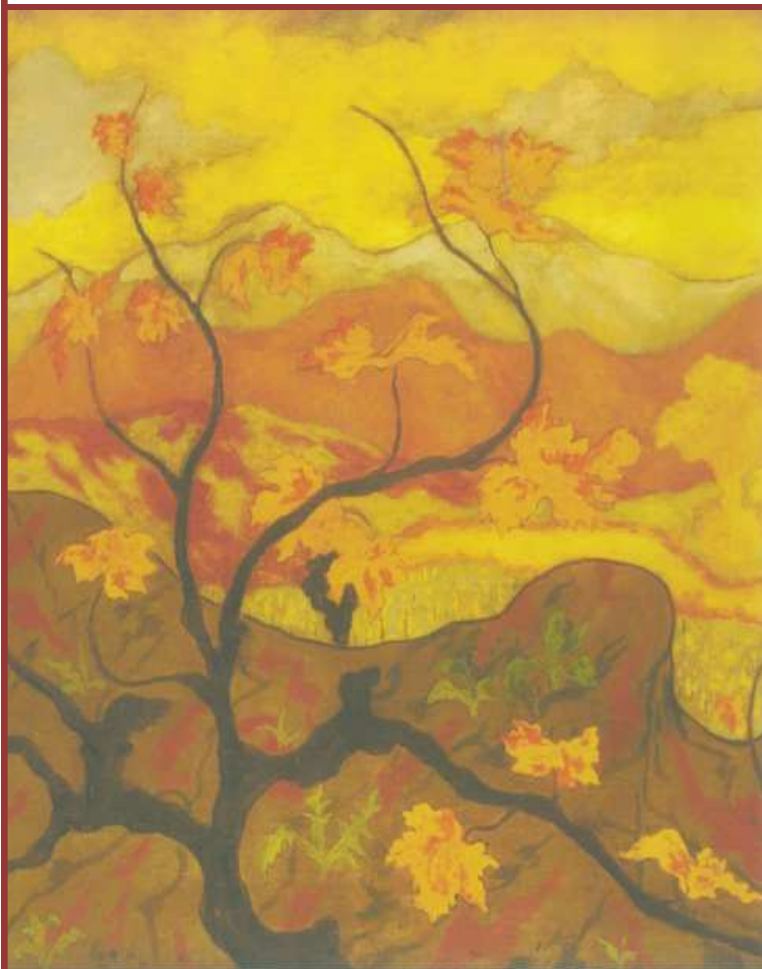


2007 BRUNELLO EASY, EARLY CHARM



BRUNELLO DI MONTALCINO

DENOMINAZIONE DI ORIGINE CONTROLLATA E GARANTITA

COL D'ORCIA

(laying down)

WINES THAT ARE MOSTLY APPROACHABLE WITH ENJOYMENT NOW

Col d'Orcia (14.5% ABV) - 15.5

TA: Mid-ruby/red. Still youthful. Leafy, red fruits on the nose, with a touch of subtle, smoky oak. The fruit is still quite primary here, but it's framed by acidity and tannins. A touch of reduction on the palate, but it adds to the complexity of the wine. Needs time, but this has the balance to become a very good Brunello. 17

NB: Deep color, with turn on the rim. Oak and fruit on the nose, but subtly. Tannins a bit tough, acid okay, but fruit a bit blousy. All there, but lacks finesse. Drink 2014+? 14

BB: Deep garnet, ruby. Clean, intense, youthful, mature, refined red-fruit nose, with raspberries and strawberries and hints of graphite. Full body, with mature, clean, crunchy red fruit; fairly long. 16

Top wines

La Gerla 18.5

Col d'Orcia 17

Poggio Antico Altero 17

Canalicchio di Sopra 17

Castelgiocondo 17

Il Poggione 17

Argiano 16.5

Campogiovanni 16.5

La Poderina 16.5

Castello Romitorio 16.5

Average and range of scores

	Average	Range
Tim Atkin MW	14.5	10-18.5
Nicolas Belfrage MW	15.5	10-18.5
Bruno Besa	16	13-18.5
All wines	15.5	10-18.5

ISSUE 37 2012 STOPPING HEADS SPINNING David Schildknecht explores the role of the critic

THE BIG MYTH Italy and the American palate • WHOLE-BUNCH The risks and rewards of stems
LEBANON Mediterranean and Middle Eastern • NEW WORLDS American alternatives to Bordeaux
LAYING DOWN 2007 Brunello • VIRTUAL SIGNS New old cheeses • ON THE VINE Joh Jos Prüm
BORDEAUX PORTRAIT Château Calon-Ségur • SAVOR NV Champagne • SYMPOSIUM Stonefields Dinner
ON THE VINE Mayacamas • FAKES Advice from the anti-fraud front line • REVIEW Bollinger Rosé
PER SE Morey-St-Denis • SAVOR Alsace, Austrian, and German Riesling • FIELD GRAFT Quinta do Centro

HUGH JOHNSON • ANDREW JEFFORD • MICHEL BETTANE • FRANCIS PERCIVAL • DAVID SCHILDKNECHT • TOM STEVENSON